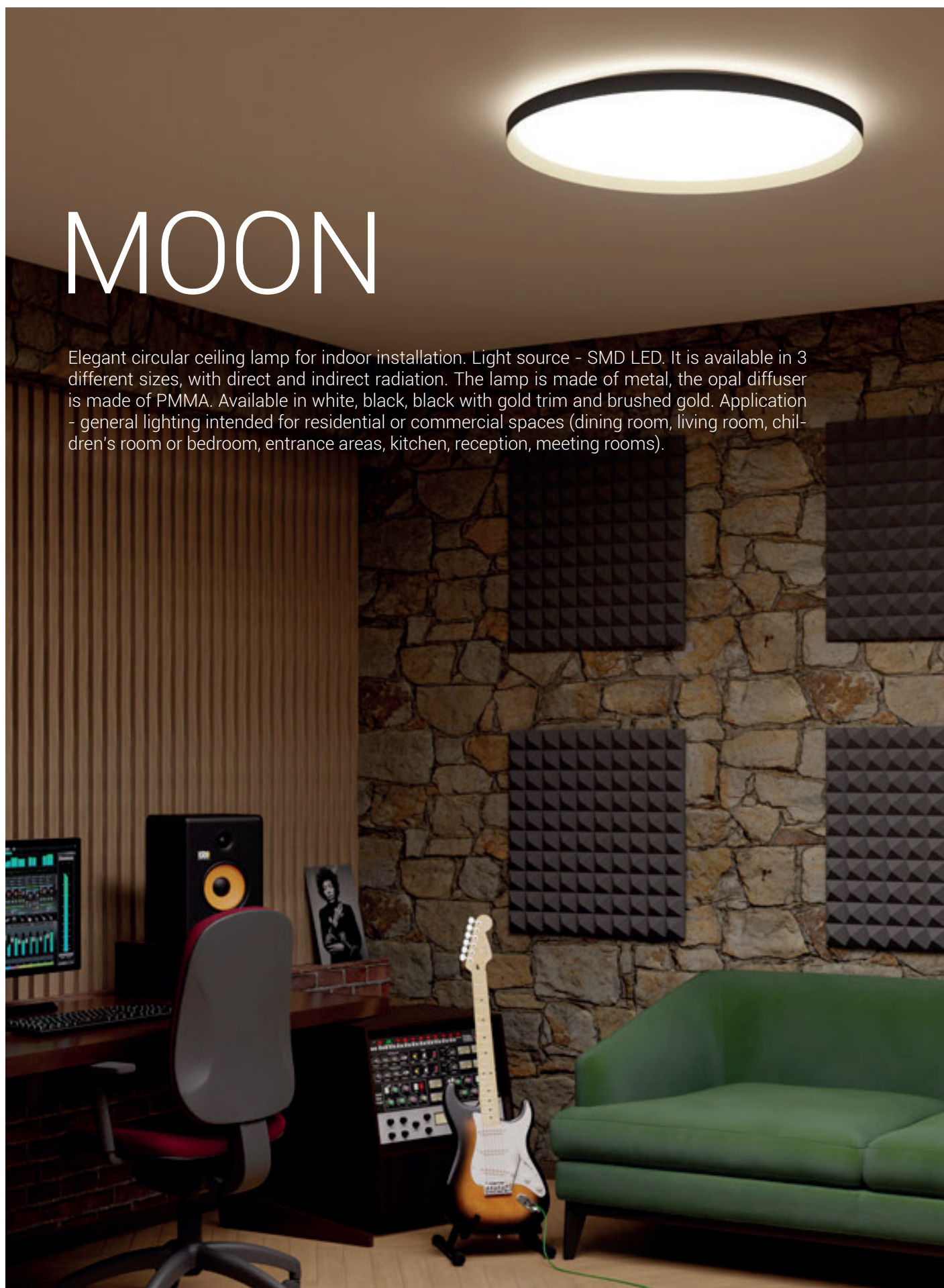
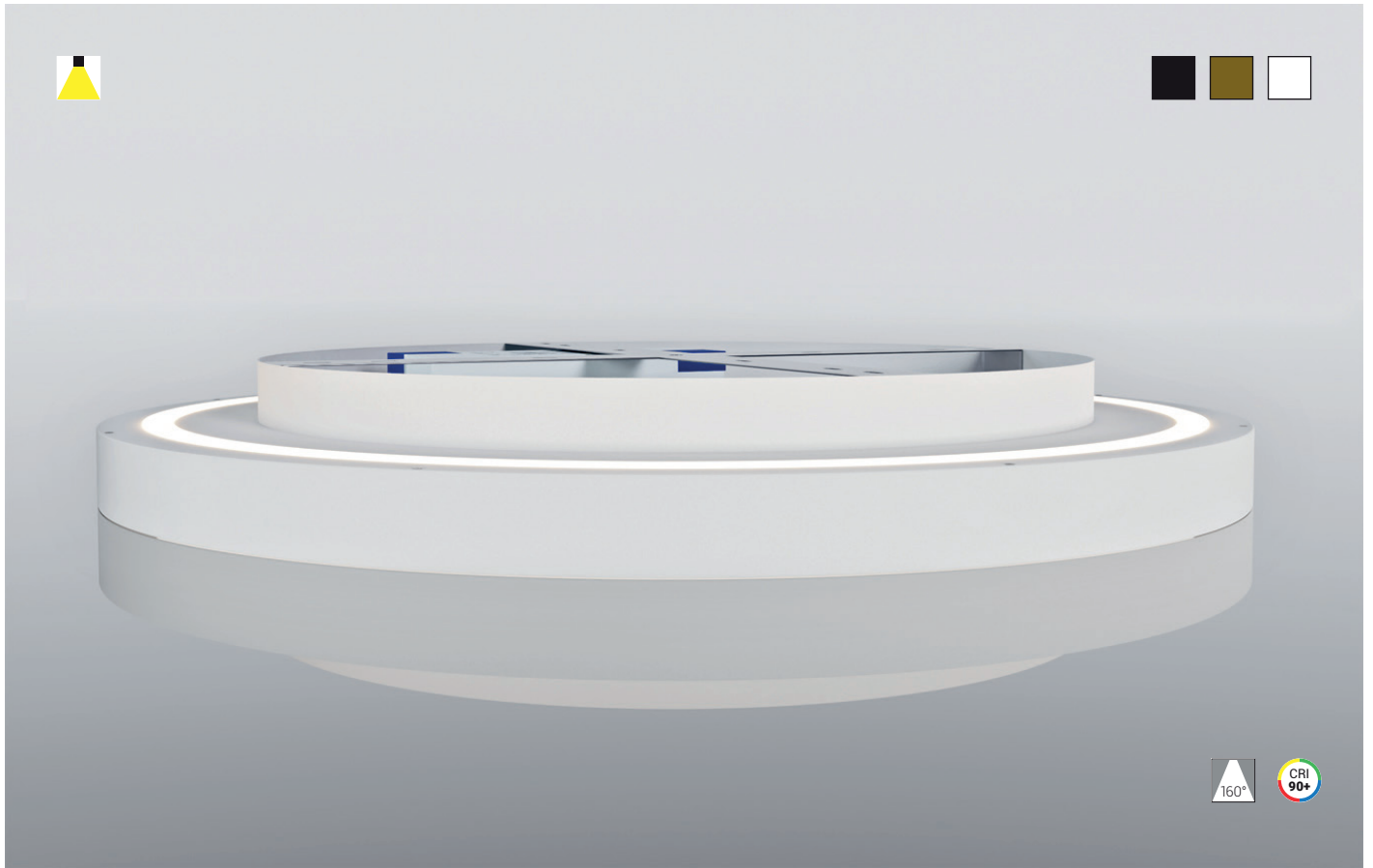


MOON

Elegant circular ceiling lamp for indoor installation. Light source - SMD LED. It is available in 3 different sizes, with direct and indirect radiation. The lamp is made of metal, the opal diffuser is made of PMMA. Available in white, black, black with gold trim and brushed gold. Application - general lighting intended for residential or commercial spaces (dining room, living room, children's room or bedroom, entrance areas, kitchen, reception, meeting rooms).



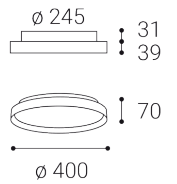


MOON 40

36W

2CCT 3000K/4000K

2800 lm

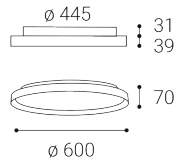


MOON 60

60W

2CCT 3000/4000K

4200 lm



MOON 80

88W

2CCT 3000/4000K

6160 lm

