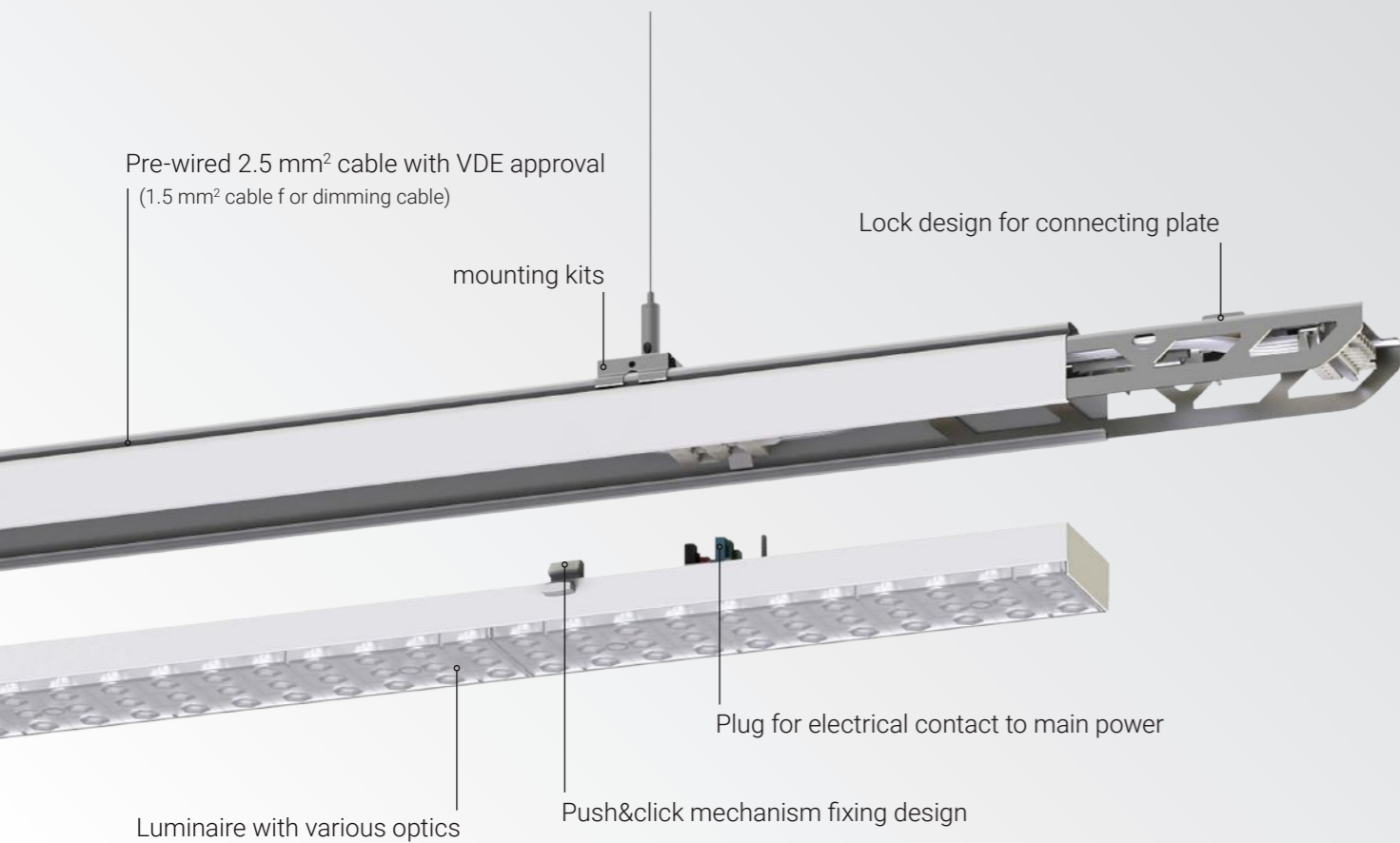




XENO
LINEAR LIGHT
SYSTEM

CONTINUOUS LINE SYSTEM WITH INNOVATIVE DESIGN

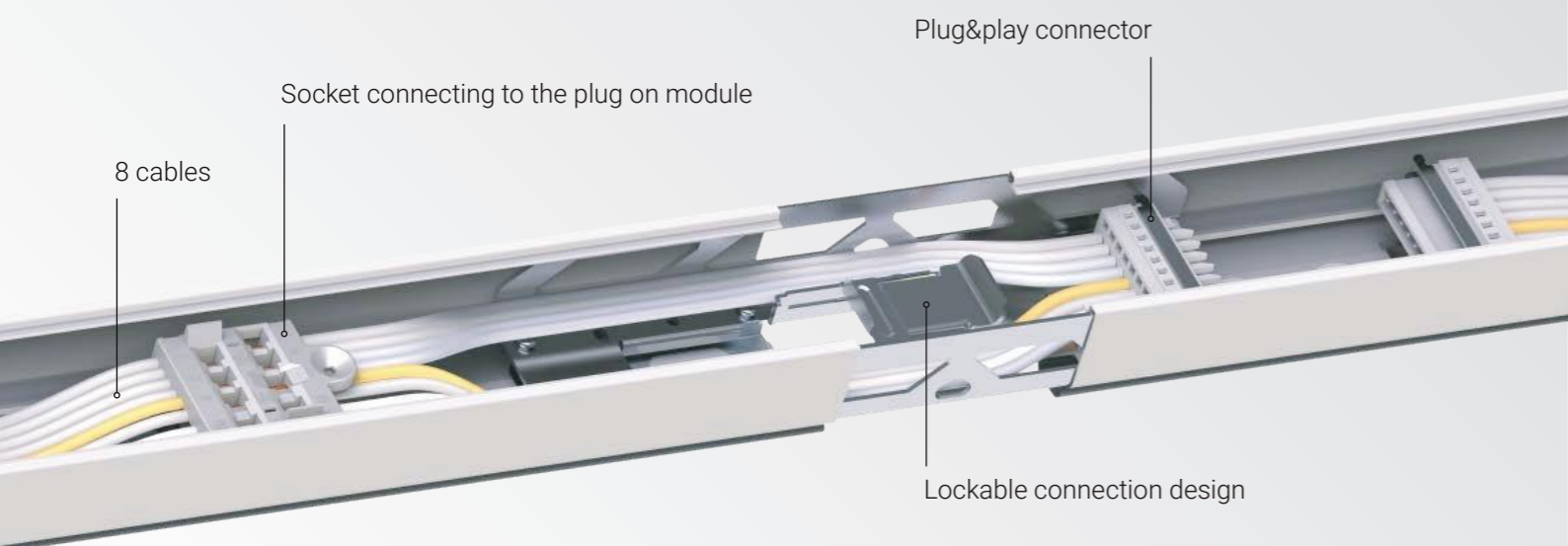


Efficient, flexible and versatile linear light system providing lighting solution for various applications of industrial, commercial, office etc.

Now available as an **IP54 version** for better protection.

Provides many lighting options with various luminaire elements, optics, functional modules to meet different lighting requirements. **Saves time and costs** due to its extremely easy and tool less installation and maintenance design.

ENDLESS CONNECTION AND LIMITLESS POWER FEEDING



XENO SYSTEM MODULE 150 IP40

Linear luminaire system, connectable to assemblies. Couplings, hinges, power supply and other components are available. Use - shops, showrooms, commercial premises, residences.

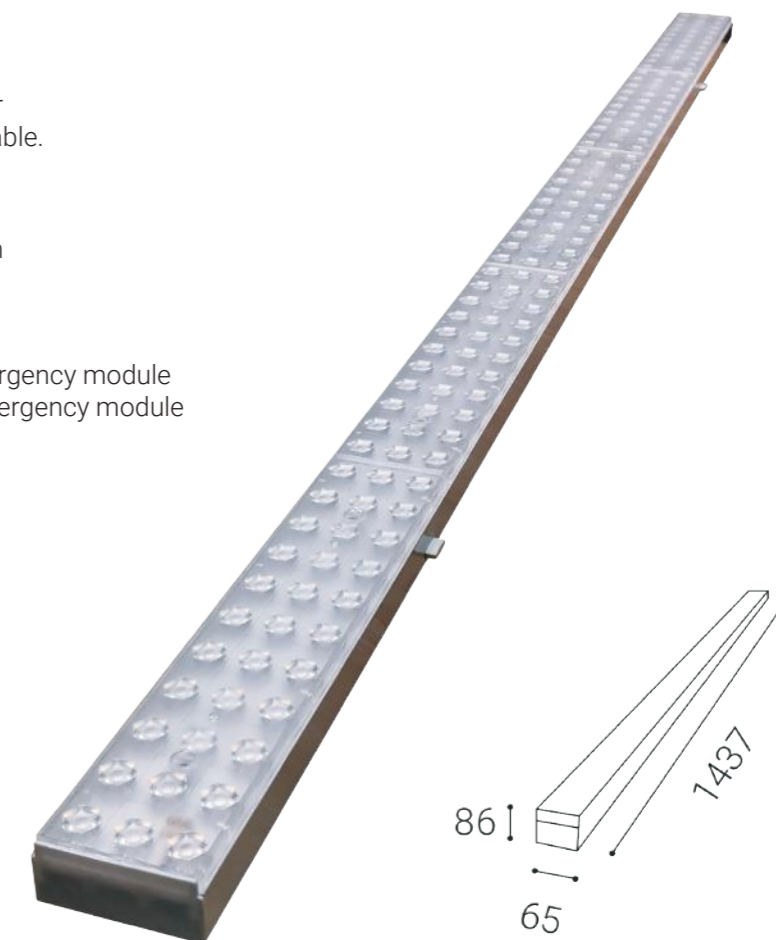
25-75W | 4000K | 4000 – 12 000 lm

Optics 90° **6350141D**

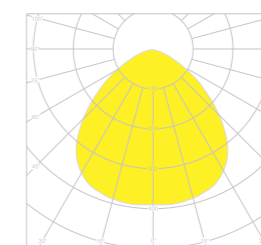
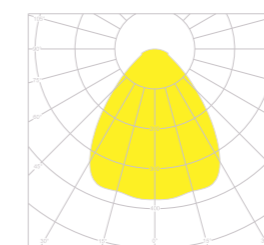
Optics 120° **6351441D**

Optics 90° **6350241DEM90** with Emergency module

Optics 120° **6350241DEM120** with Emergency module



2 available optics:



XENO SYSTEM MODULE 150 IP54

25-75W | 4000K | 4000 – 12 000 lm

Optics 90° **6351541D**

Optics 120° **6351741D**

Optics 90° **6351841DEM90** with Emergency module

Optics 120° **6351841DEM120** with Emergency module



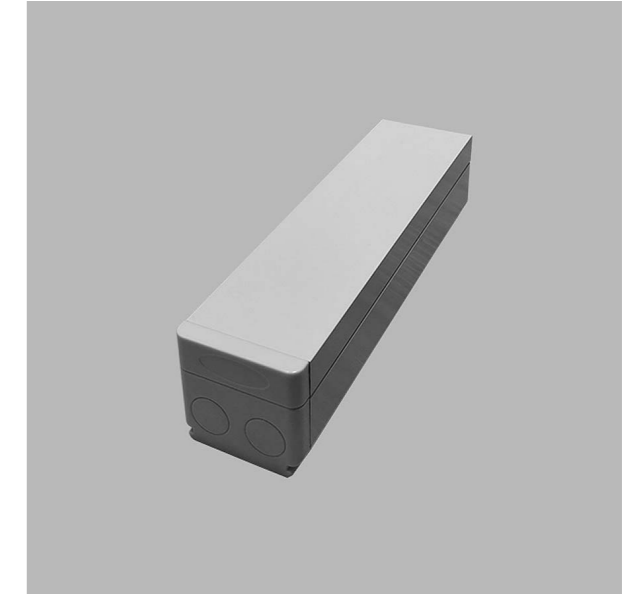
XENO RAIL 150
XENO system rail.
6350301



XENO RAIL 300
XENO system rail.
6350401



XENO POWER TERMINAL
Power supply for the XENO system.
6351000



XENO END BOX
XENO end box.
6350901



XENO BLANK COVER 150
XENO system cover.
6350501



XENO TRACK MODULE 150
3-phase module of the XENO system.
6350601



XENO END CAP
Xeno end cap.
6350801



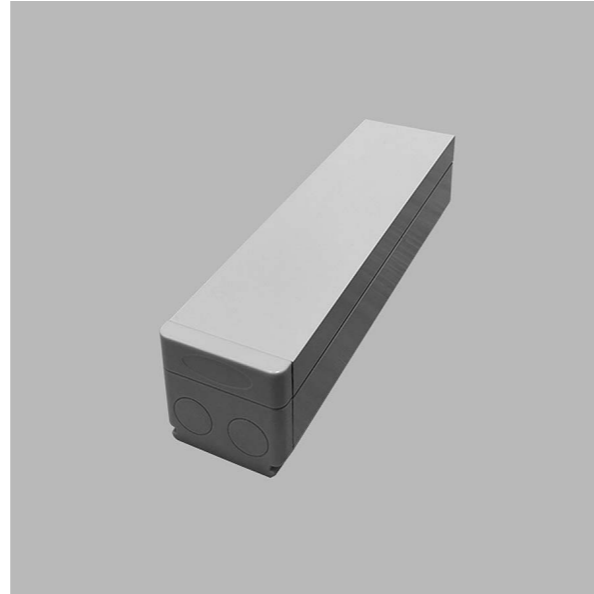
XENO IP54 BLANK COVER 150
XENO IP54 system cover.
6351901



XENO IP54 END CAP

XENO IP54 system terminal.

6352001



XENO IP54 END BOX

XENO IP54 system termination.

6352101



XENO SUSPENSION

XENO suspension.

6350700



XENO IP54 SILICONE IP KIT

XENO IP54 system hinge.

6352200

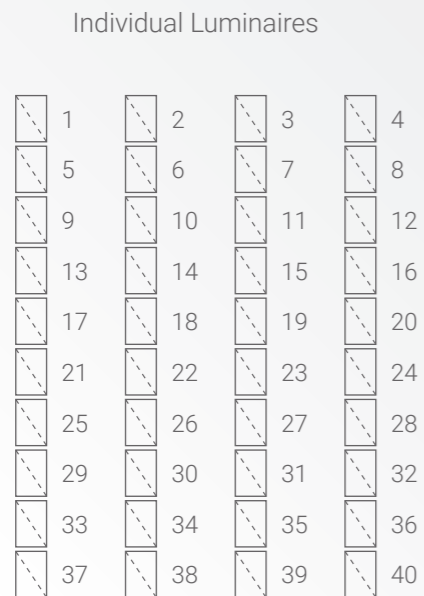


XENO PG 13,5

XENO PG 13,5.

6351200

TOOL-FREE INSTALLATION SAVING 70% TIME & COSTS



Luminaires: 40

Wiring points: 40



Luminaires: 40

Wiring points: 4

XENO SYSTEM EFFICIENCY COMPARISON

Application: SUPERMARKET	T8 2x58W(Fluorescent)	XENO (LED)
Luminous flux	8364 lm	8800 lm
Power consumption	123W	55W
Luminous efficacy	68 lm/w	160 lm/w
Total power consumption	28905W	11880W
Power factor	0.9	0.95
Direct/indirect emitting	100% direct	100% direct
Optical type	diffuser	led lens
Number of luminaires	235	216

60% less energy

10% fewer luminaires

Application: WAREHOUSE	Metal halide	XENO (LED)
Luminous flux	10500 lm	11625 lm
Power consumption	150W	75W
Luminous efficacy	70 lm/w	155 lm/w
Total power consumption	174000W	74250W
Power factor	0.8	0.95
Direct/indirect emitting	indirect	100% direct
Optical type	reflector	led lens
Number of luminaires	1160	990

58% less energy

10% fewer luminaires

Application: PRODUCTION HALL	T5 2x54W(Fluorescent)	XENO (LED)
Luminous flux	8364 lm	8800 lm
Power consumption	115W	55W
Luminous efficacy	68 lm/w	160 lm/w
Total power consumption	21260W	9240W
Power factor	0.9	0.95
Direct/indirect emitting	100% direct	100% direct
Optical type	diffuser	led lens
Number of luminaires	188	168

57% less energy

10% fewer luminaires



 **Led2**[®]
L I G H T I N G

www.led2.eu